

# PARTS LIST

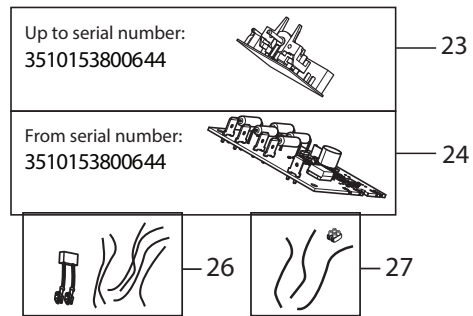
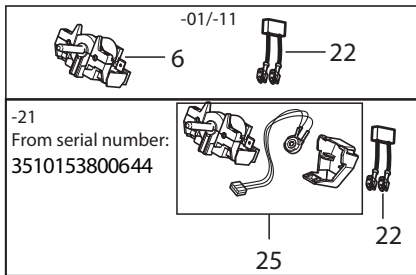
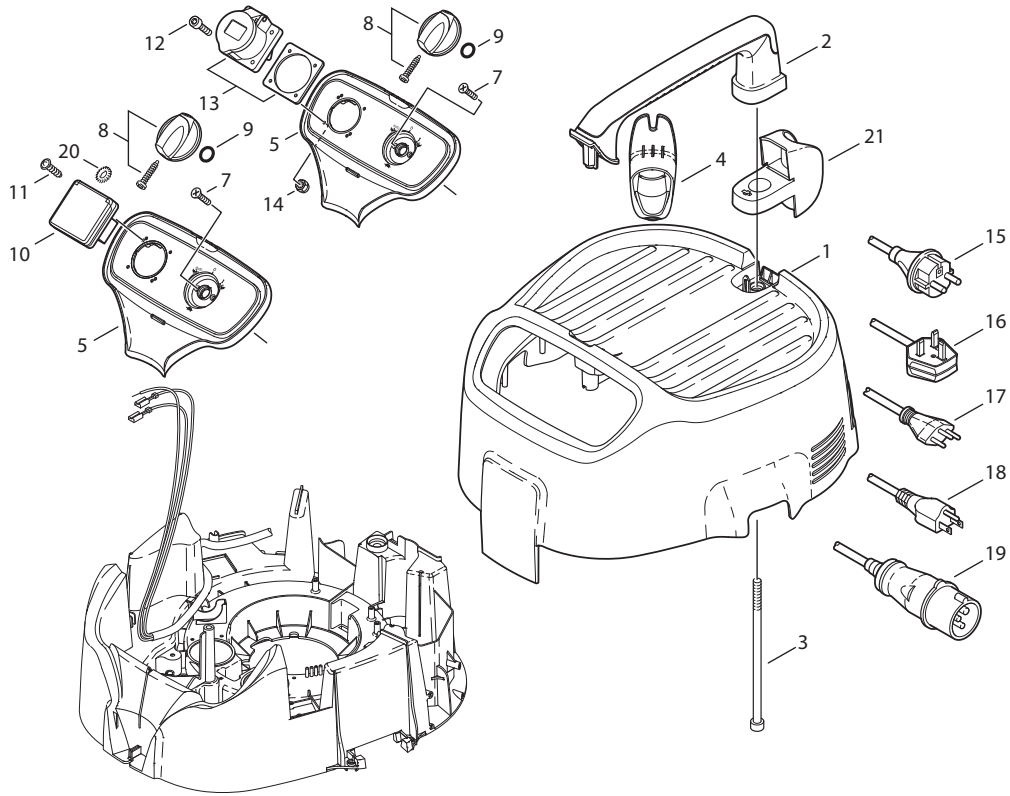


2017.07.20

# TABLE OF CONTENTS

---

Cabinet 751-11, -21, 19 GALLON.....	1
Base, motor, filter 751-01, -11, -21, 19 GALLON.....	3
Container 751-01, - 11, -21, 19 GALLON.....	5
Frame 751-01, -11, -21, -61, 19 GALLON, 19 GALLON AE.....	7
Accessories 550, 751.....	9
RECOMMENDED SPARE PARTS.....	11

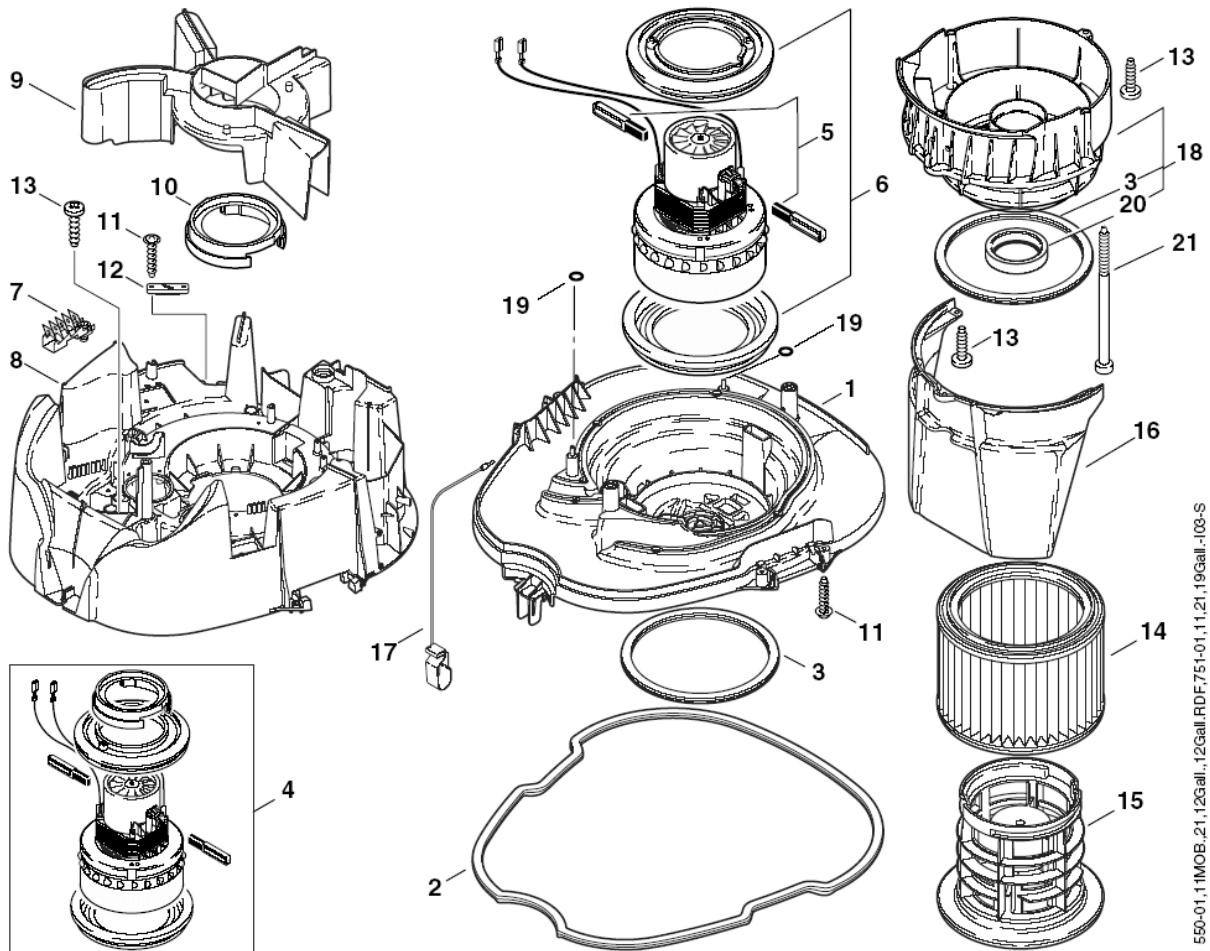


Pos.	Numer Produktu	ilość	Opis	Notes
1	107402652	1	OBUDOWA	
2	107402650	1	UCHWYT	
3	909100084	2	SCREW M6X140	
4	302000380	1	KLIPS	
5	302000757	1	SWITCH BOX -21 ATTIX 5	[1]
5	302001287	1	SWITCH CASE ATTIX 5	[2]
6	107413448	1	ROTARY SWITCH 2 POS 16A KIT	[3]
7	18274	2	COUNTERSUNK SCREW M4X12	
8	909100204	1	ROTARY KNOB 6X5 BLUE	
9	9868	1	O-RING 10.2X2.5 NBR 70	
10	302004034	1	SOCKET 16A/250V EU	[4]
10	302004336	1	SOCKET 13A/250V GB	[5]
10	107400059	1	SOCKET 10A/250V CH	[6]
10	302004338	1	SOCKET 15A/125V US/CSA	[7]
10	302000683	1	SOCKET 10A/250V DK	[8]
11	11256	2	SCREW 3.5X18	
12	50598	4	SCREW M5X20	[9]
13	107402842	1	OUTLET 2P AND PE 16A 110V	[9]
14	7417	4	HEXAGON THIN NUT	[9]
15	107402641	1	PRZEWÓD ZASILAJĄCY H05RR-F 3G1.5X8X2	[4]
15	107402642	1	POWER CORD H05RR-F 3G1.0X8.2	[8]
16	107400270	1	CORD H05RR-F 3G1.5 BS1 363 GB	[5]
17	107400267	1	CORD H05RR-F 3G1.0 CH	[6]
18	302004332	1	POWER CORD US	[7]
19	107400271	1	CORD H07BQ-F 3G2.5 GB	[9]
20	4021	2	SERRATED LOCK WASHER A4	[7]
21	302000382	1	TUBE FASTENER	[10]
22	107404542	1	ANTI-INTEFERENCE CAPACITOR SET	[3]
23	302000627	1	ELECTRONIC 110-120V SET1	[11]
23	302000825	1	ELECTRONIC SOFT START 100-	[12]
23	302000826	1	PRZELĄCZNIK OBR. 240VC	[13]
23	107408926	1	ELECTRONIC-UNIT EA M. DREHZ. 220-240V	[14]
24	107415188	1	PCBA 1M-2S KIT1 220-240V	[3]
24	107415189	1	PCBA 1M-2S KIT1 100-120V	[3]
24	107415190	1	PCBA AUTO ON/OFF 1M-2S KIT1 220-240V	[3]
25	107413449	1	ROTARY SWITCH 3 POS+REG 16A KIT	[3]
26	107414081	1	WIRE/CAPACITOR KIT1	
27	107414082	1	WIRES FOR US SOCKET KIT	

## Part Notes:

- [1] - 550-21, 751-21, 12GALL.RDF
- [2] - 550-11 MOBIL,751-11, 19GALL.
- [3] - PB-COM-LI-2015-002 ATTIX 751\_New Electronics
- [4] - \*EU\*
- [5] - \*GB,230V\*
- [6] - \*CH\*
- [7] - \*US\*
- [8] - \*DK\*
- [9] - \*GB,110V\*
- [10] - 550-11 MOBIL  
STOCK COVERS GUARANTEE
- [11] - 100-120V, 12GALL.RDF  
PB-COM-LI-2015-002 ATTIX 751\_New Electronics
- [12] - 100-120V, 751-11\*GB,110/50\*, 19GALL.  
PB-COM-LI-2015-002 ATTIX 751\_New Electronics
- [13] - 220-240V  
PB-COM-LI-2015-002 ATTIX 751\_New Electronics
- [14] - 220-240V, 550-21, 751-21  
PB-COM-LI-2015-002 ATTIX 751\_New Electronics

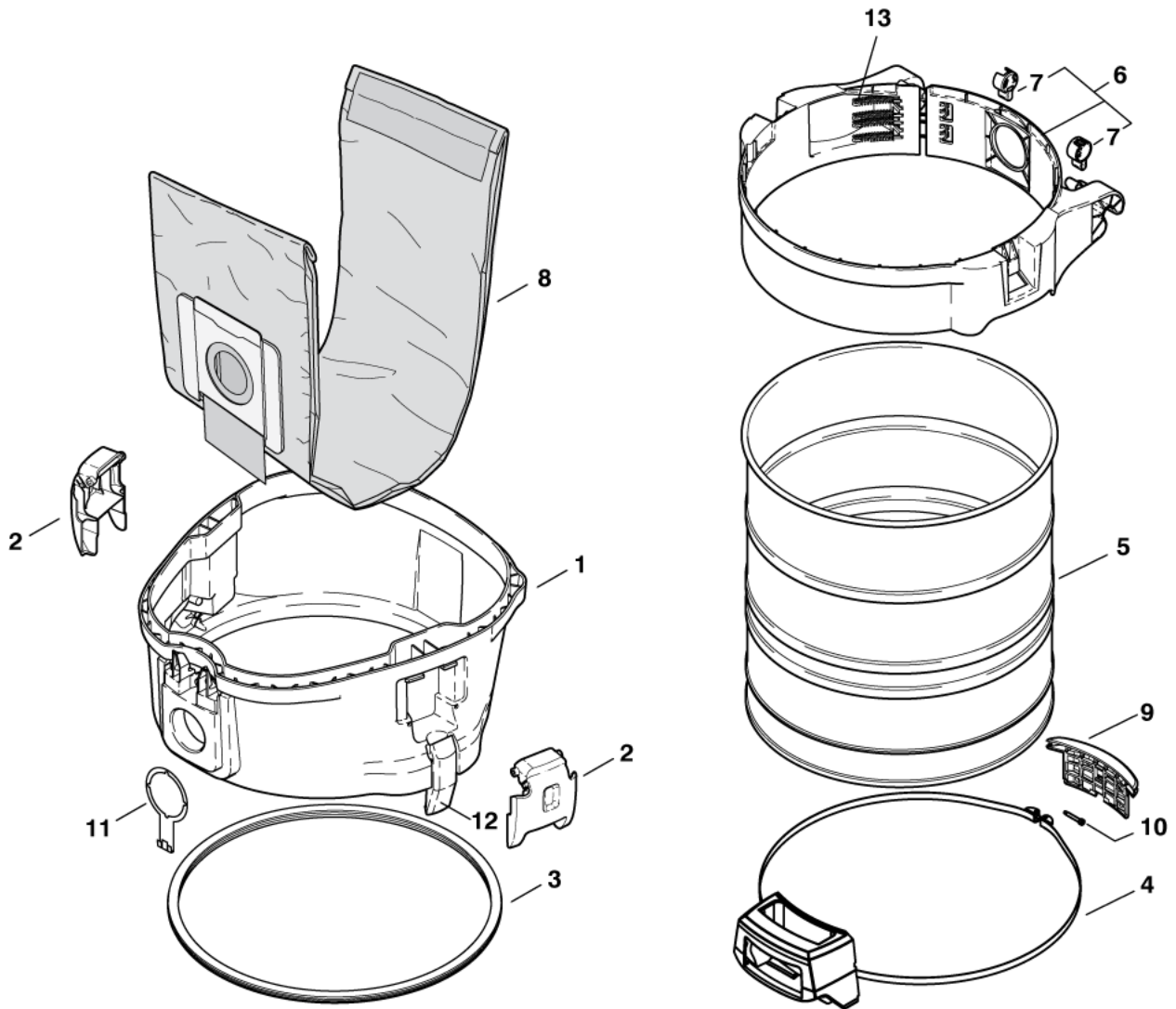
ATTIX 550-01, 550-11 MOBIL, 550-21, 12 Gallon, 12 Gallon RDF, 751-01, 751-11, 751-21, 19 Gallon



Pos.	Numer Produktu	ilość	Opis	Notes
01	302000372	1	BASE	
02	302000637	1	GASKET FOR CONTAINER ATTIX 5-7	[1]
03	302000460	1	USZCZELKA FILTRA	
4	26685	1	MOTOR TURBINE 1200W 120V	[2]
04	26784	1	MOTOR 120V 1200W	[3]
04	49594	1	TURBINA 220V	[4]
04	26785	1	MOTOR 120V 1000W	[5]
04	26783	1	MOTOR 100V 1200W	[6]
05	26775	1	CARBON BRUSH SET L	[7]
05	49625	1	SZCZOTKI WĘGLOWE C	[8]
05	26774	1	CARBON BRUSH SET M	[9]
06	28875	1	RING	[10]
06	42538	1	MOTOR BEARING 2 PCS	[11]
06	107402627	1	ZESTAW USZCZELNIEN	[11]
06	29205	1	SEAL	[12]
07	302000755	1	EARTH CONNECTOR	
08	107402638	1	PLATE CHUCK ATTIX 550 PP KIT	
09	302000373	1	AIR CONDUCTION ATTIX 5-7 PP	
10	47036	1	COLLAR	
10	47035	1	COLLAR 55 SHORE A EPDM	[13]
11	11256	6	SCREW 3.5X18	
12	5697	1	STRAP 3X8X33	
13	909100138	10	SCREW 5X20	
14	11753	1	WKŁAD FILTRA Ø185X140	[14]
14	302000490	1	FILTR GŁÓWNY D185X140 KLASA M	
15	107402646	1	FILTER SUPPORT CAGE ATTIX/AERO PP	
16	302000379	1	DEFLECTOR	
17	61174	1	EARTHING CABLE	
17	302000823	1	SPRĘŻYNA 41.8X14 AS BR	[15]
18	302001641	1	ADAPTOR SUBASSEMBLE	[16]
19	62359	2	GASKET 9X4X1	
20	302001546	1	GASKET	[16]
21	909100196	3	SCREW 5.0X90	[16]

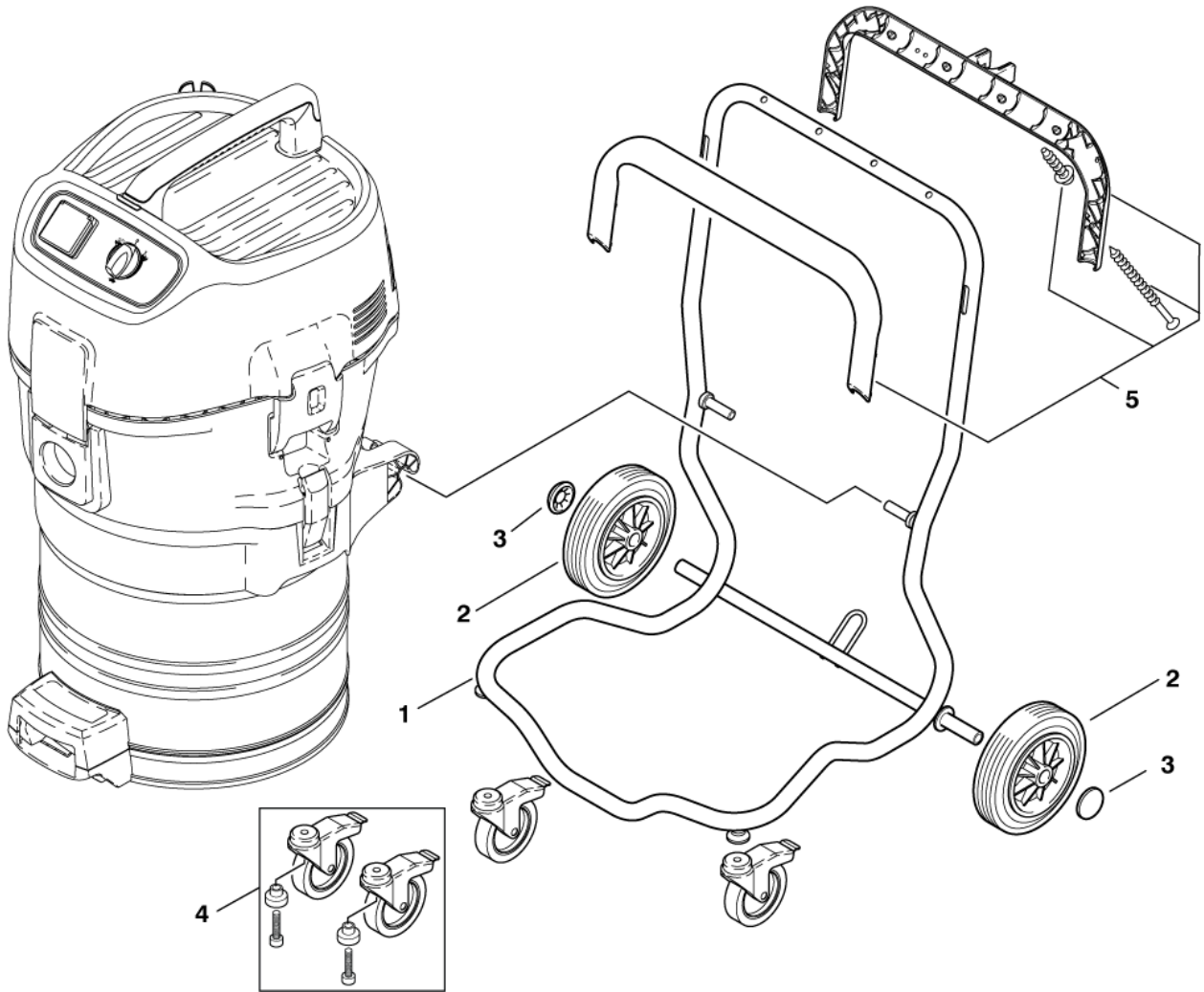
## Part Notes:

- [1] - STOCK COVERS GUARANTEE
- [2] - ATTIX 751-11 110/1/50 GB
- [3] - 110-120V/1200W
- [4] - 220-240V/1200W  
PLEASE CONTACT CARWASH DIRECTLY
- [5] - 120V/1000W
- [6] - 100V/1200W
- [7] - FOR IDENTIF.LETTER "L"
- [8] - FOR IDENTIF. LETTER "C"  
PLEASE CONTACT CARWASH DIRECTLY
- [9] - FOR IDENTIF.LETTER "M"
- [10] - FOR IDENTIF.LETTER"L"+"M"
- [11] - FOR IDENTIF. LETTER "C"
- [12] - FOR IDENTIF. LETTER "L"+"M"
- [13] - 12GALL., 12GALL. RDF, 19GALL.
- [14] - \*ZA\*
- [15] - \*GB,230V\*
- [16] - 751-01, 751-11, 751-21, 19GALL.



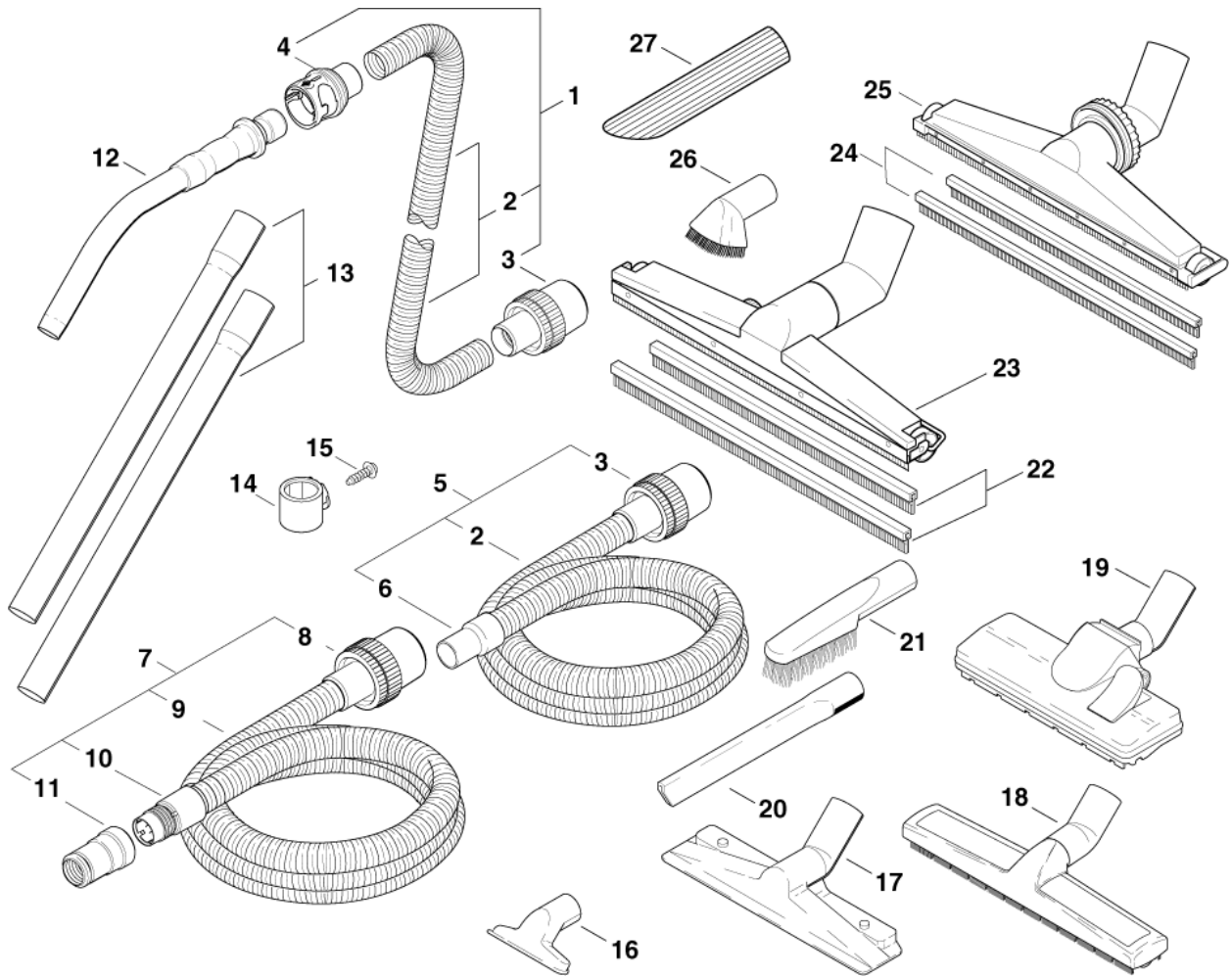
Pos.	Numer Produktu	ilość	Opis	Notes
01	107400257	1	PAS KORPUSU Z WLOTEM Attix 7	
02	302000349	2	LOCKING CLAMP	
03	302001432	1	USZCZELKA CONTAINER	
04	302001605	1	HANDLE W/ TAPE	
05	107402657	1	CONTAINER R408X430SS	
06	302001704	1	BELT CONTAINER D480 SET1	
07	302001441	2	ZACZEP	
08	302001484	1	WORKI FILTRUJĄCE ATTIX 7 5-P	
09	302001363	1	CONTAINER STOPPER ATTIX 7	
10	302001613	1	SCREW M5X35X5 TO ATTIX7	
11	107400145	1	ŁĄCZNIK UZIEMIAJACY	
12	19880	1	KLAMRA	
13	909100383	1	SPRING 1.40X7.5X113	





---

<b>Pos.</b>	<b>Numer Produktu</b>	<b>ilość</b>	<b>Opis</b>	<b>Notes</b>
01	302001437	1	RAMA WÓZKA ATTIX 7	
02	107401077	2	WHEEL 200X50 KIT	
03	3750	2	KAPSEL KOŁA D20	
04	107401054	1	CASTOR TURNABLE WITH BRAKE KIT	
05	302001706	1	HANDELBAR KIT-1	



Pos.	Numer Produktu	ilość	Opis	Notes
01	25537	1	WAŻ SSAZY Ø36X4000MM	
01	302001677	1	WAŻ ODPORNY NA TEMP I OLEJ 36X3500	[1]
01	46948	1	WAŻ ELAST.D36X3000MM ZE ZŁĄCZAMI	
02	11985	1	WAŻ Ø36	
02	6429	1	HOSE OIL RES Ø 36 PER METRE	[1]
03	15102	1	MUFA Ø36/50	
04	302001345	1	COUPLING SLEEVE Ø36 AS POM	
05	15805	1	WAŻ UNIWERSALNY D36X3000 MM EVAF	
06	11597	1	ŁĄCZNIK WĘŻA D36 PVC	
07	107406091	1	HOSE D27X3500 AS WITH TOOL ADAPTER	
08	15369	1	MUFA	
09	15326	1	HOSE AS Ø27 EVA PER METRE	
10	63509	1	MUFA D27	[2]
11	107404520	1	ADAPTER Ø27/36	
12	46691	1	UCHWYT ZAKRZYWIONY D36MM SS	
12	302000528	1	UCHWYT ZAKRZYWIONY D36MM ST/CR	
13	107408074	1	RURA STAL NIERDZ Ø 36 500MM, 2 SZT	
13	302000529	1	RURA D36 2X505MM ST/CR	
14	26821	1	BRACKET	
14	28546	1	STRAP FOR NOZZLE	[3]
15	12400	1	SCREW 3.5X13	[2]
16	14295	1	SSAWA UNIWERSALNA D36X115	
17	5147	1	SSAWA SUCHO 360 MM Ø36 ALU	
18	60356	1	SSAWA SUCHO/MOKRO 360 MM Ø36	[4]
19	302000477	1	SSAWA COMBI Ø36X260MM PP	
20	6084	1	SSAWA SZCZELINOWA D36X300 PP	
21	6086	1	SSAWA Z WŁOSIEM D36X230 PP/PA	
22	15352	1	LISTWA SSAWY KPL.	[1]
23	15349	1	SSAWA ALUM NA MOKRO 450MMXØ36MM	[1]
24	6114	1	RUBBER STRIP SET FOR 5149 RUBBER 50SH	
25	5149	1	SSAWA PODŁOGOWA D36X400 S/M	
26	5146	1	SSAWA Z WŁOSIEM D36X70	
27	5067	1	SSAWA SZCZELINOWA Ø 36 mm 190 mm	

## Part Notes:

- [1] - 751-71
- [2] - STOCK COVERS GUARANTEE
- [3] - 12GALL.RDF
- [4] - WET/DRY



# RECOMMENDED SPARE PARTS

ATTIX 751-11

2014.11.27

2015.06.29

Pos.	Numer Produktu	ilość	Opis	Notes
01	107413315	1	BASE PLATE - KIT	
01	11832	1	SOCKET	
01	302001441	1	ZACZEP	
01	107400271	1	CORD H07BQ-F 3G2.5 GB	[1]
01	302004034	1	SOCKET 16A/250V EU	[2]
01	47302	1	CLAMPING RING 28.6 20	
01	14808	1	COUPLING FEMALE G1/4	[3]
01	3750	1	KAPSEL KOŁA D20	
01	107400270	1	CORD H05RR-F 3G1.5 BS1 363 GB	[4]
01	60561	1	SILNIK 220/240V 1200W EC	[5]
01	107404779	1	WAŻ PRZEWODZĄCY 27X3500	[6]
01	64937	1	SCREENING FILTER	[7]
01	302001711	1	ELECTRONIC 100-120V SET1	[8]
01	302001482	1	PIPE COUPLING C 1.1/4/	
01	26784	1	MOTOR 120V 1200W	[9]
01	302000428	1	CZUJNIK PRZEPŁYWU KPL.	
01	107412690	1	COVER WITH FLAP ATTIX 560	
01	302000751	1	WKŁAD FILTRA Ø275X185 PET M-CLASS	
01	6114	1	RUBBER STRIP SET FOR 5149 RUBBER 50SH	
01	19880	1	KLAMRA	
01	29205	1	SEAL	[10]
01	302000433	1	POWER CORD H05RR-F 3G0.75X8.2 DK	[11]
01	107402254	1	GASKET KIT D42X58X6	
01	107402635	1	ELEKTROMAGNES 24V	[12]
01	302000853	1	PLYTKA ELEKTRONICZNA 230V	[13]
01	302000693	1	SUCTION HOSE D32X5000 EL.CONDU	[14]
01	107402642	1	POWER CORD H05RR-F 3G1.0X8.2	[15]
01	107406091	1	HOSE D27X3500 AS WITH TOOL ADAPTER	[16]
01	302000432	1	POWER CORD H05RR-F 3G0.75X8.2M SNV -CH	[17]
01	107402655	1	TEMPERATURE SENSOR KIT	[18]
01	61174	1	EARTHING CABLE	
01	909100204	1	ROTARY KNOB 6X5 BLUE	[19]
01	302000297	1	PUMP SUBM. 230/50 650W G5/4/	[20]
01	302000307	1	PUMP SUBM. 115/60 650WC G5/4/	[21]
01	302000435	1	POWER CORD SJTW-A AWG18/3X8.2M NEMA -US	[22]
01	107400145	1	ŁĄCZNIK UZIEMIAJĄCY	
01	15352	1	LISTWA SSAWY KPL.	[18]
01	42538	1	MOTOR BEARING 2 PCS	[23]
01	302001678	1	AIR MANIFOLD ASSY. SET	[24]
01	302000825	1	ELECTRONIC SOFT START 100-	[25]
01	302000833	1	PLYTA ELEKTRONICZNA EC 230V KPL.	[26]
01	302001704	1	BELT CONTAINER D480 SET1	
01	7729	1	ZŁĄCZE GEKA	
01	15805	1	WAŻ UNIWERSALNY D36X3000 MM EVAF	
01	6429	1	HOSE OIL RES Ø 36 PER METRE	[18]
01	107402651	1	TENSION JACK	
01	302000373	1	AIR CONDUCTION ATTIX 5-7 PP	
01	107402641	1	PRZEWÓD ZASILAJĄCY H05RR-F 3G1.5X8X2	[27]
01	302000529	1	RURA D36 2X505MM ST/CR	
01	302000460	1	USZCZELKA FILTRA	[18]
01	107400574	1	CORD H05BQ-F 3G1.0 CEE GB 110	[28]
01	302004338	1	SOCKET 15A/125V US/CSA	[29]
01	302000514	1	GASKET	
01	302001553	1	SEAL CLAMP	
01	302001552	1	SEAL CLAMP	
01	15348	1	SSAWA ALUMINIOWA 450XØ36MM	
01	107401054	1	CASTOR TURNABLE WITH BRAKE KIT	
01	302001425	1	ELECTRONIC EA.W.SPEED EC	[16]
01	302001605	1	HANDLE W/ TAPE	

## RECOMMENDED SPARE PARTS

ATTIX 751-11

2014.11.27

2015.06.29

Pos.	Numer Produktu	ilość	Opis	Notes
01	302000823	1	SPRĘŻYNA 41.8X14 AS BR	[30]
01	302000385	1	OSŁONA FILTRA	
01	26783	1	MOTOR 100V 1200W	[31]
01	47364	1	PACKING RING 108X86X18	
01	107400579	1	PIEZO BUZZER	
01	26774	1	CARBON BRUSH SET M	[32]
01	107413310	1	FILTER SUPPORT CAGE - KIT	
01	302000430	1	POWER CORD H05RR-F 3G0.75X8.0	[33]
01	302001363	1	CONTAINER STOPPER ATTIX 7	
01	302000637	1	GASKET FOR CONTAINER ATTIX 5-7	[34]
01	14809	1	COUPLING MALE G1/4	[3]
01	15475	1	OSŁONA FILTRA Ø143X140MM SS	
01	302004333	1	POWER CORD H05RR-F 3G1.5X8.4 AS3112 -AU	[35]
01	302000349	1	LOCKING CLAMP	
01	302000685	1	POWER CORD H05RR-F3G0.75X8.4 S	[36]
01	107402646	1	FILTER SUPPORT CAGE ATTIX/AERO PP	
01	107402842	1	OUTLET 2P AND PE 16A 110V	[37]
01	107402627	1	ZESTAW USZCZELNIENI	[38]
01	107400059	1	SOCKET 10A/250V CH	[39]
01	60877	1	BRACKET	
01	302004336	1	SOCKET 13A/250V GB	[40]
01	48333	1	BEZPIECZNIK 6.3X32 10	[26]
01	302000826	1	PRZELĄCZNIK OBR. 240VC	[41]
01	49625	1	SZCZOTKI WĘGLOWE C	[42]
01	302000217	1	ELECTROMAGNET 12V	[43]
01	26785	1	MOTOR 120V 1000W	[44]
01	302001682	1	WAŻ AS 36X5000MM	
01	302000490	1	FILTR GŁÓWNY D185X140 KLASA M	
01	302000852	1	ELECTRONIC 120V SET1	[45]
01	107410490	1	COLLAR	
01	302001434	1	FILTER SIEVE BASKET Ø200X372 MM SS	
01	107402618	1	PIPE COUPLING KIT	
01	26601	1	COAXIAL SUCTION HOSE D32	[46]
01	107401077	1	WHEEL 200X50 KIT	
01	62359	1	GASKET 9X4X1	
01	11985	1	WAŻ Ø36	
01	15349	1	SSAWA ALUM NA MOKRO 450MMXØ36MM	[18]
01	302000528	1	UCHWYT ZAKRZYWIONY D36MM ST/CR	
01	28875	1	RING	[47]
01	49594	1	TURBINA 220V	[48]
01	107408926	1	ELECTRONIC-UNIT EA M. DREHZ. 220-240V	[49]
01	302000434	1	POWER CORD H05RR-F 3G0.7	[50]
01	107408074	1	RURA STAL NIERDZ Ø 36 500MM, 2 SZT	
01	302001708	1	POWER CORD SJTW-A AWG	[51]
01	302000372	1	BASE	[18]
01	302000627	1	ELECTRONIC 110-120V SET1	[52]
01	302001432	1	USZCZELKA CONTAINER	
01	107402619	1	SCREENING FILTER KIT	[26]
01	47035	1	COLLAR 55 SHORE A EPDM	[53]
01	11753	1	WKŁAD FILTRA Ø185X140	[54]
01	107400267	1	CORD H05RR-F 3G1.0 CH	[55]
01	302001580	1	POWER CORD H07RN-F 3G1.5X10.7	[18]
01	302001546	1	GASKET	[56]
01	107413313	1	FIXTURE 72X32X52 - KIT	
01	107411687	1	SILIKON HOSE D3X1,5 2METER - KIT	
01	107400257	1	PAS KORPUSU Z WLOTEM Attix 7	
01	302001185	1	SOCKET 10A/250V AU	[35]
01	26775	1	CARBON BRUSH SET L	[57]
01	65058	1	FINE-WIRE FUSE	[7]

# RECOMMENDED SPARE PARTS

ATTIX 751-11

2014.11.27

2015.06.29

Pos.	Numer Produktu	ilość	Opis	Notes
01	107402638	1	PLATE CHUCK ATTIX 550 PP KIT	[58]
01	302001712	1	ELECTRONIC 220-240V SET1	[59]
01	302004332	1	POWER CORD US	[60]
01	302001430	1	ELECTRONIC EC 110V SET-1	[7]
01	302001641	1	ADAPTOR SUBASSEMBLE	[61]
01	302000756	1	SWITCH BOX -01 ATTIX 5	[62]
01	107402639	1	PLATE CHUCK ATTIX 560 PP KIT	
01	302000683	1	SOCKET 10A/250V DK	[63]
01	302000477	1	SSAWA COMBI Ø36X260MM PP	
01	5149	1	SSAWA PODŁOGOWA D36X400 S/M	
01	107402653	1	FILTER RETAINING PLATE D251	
01	302000697	1	USZCZELKA FILTRA CR	
01	302000465	1	WHEEL D100X20	

## Part Notes:

- [1] - GB,110V 751-11/21, 761-21
- [2] - EU -590-21, 751-11/21, 761-71, 791-21
- [3] - 560-31XC
- [4] - GB,230V 751-01/11/21, 761-21
- [5] - 590-21, 791-21,, 791-2M/B1EUGB,230V
- [6] - 791-2M/B1
- [7] - EC 12GALLON AS/E, 791-2M/B1GB,110V
- [8] - 100-120V 751-61-71
- [9] - 110-120V/1200W 751-71
- [10] - FOR IDENTIF. LETTER L+M
- [11] - DK 751-01
- [12] - FOR 220-240V
- [13] - 220-240V 761-21
- [14] - EC 12 GALLON AS/E
- [15] - DK 751-61
- [16] - 590-21, 791-21
- [17] - CH 751-01
- [18] - 751-71
- [19] - 751-61-71
- [20] - 230V/50HZ
- [21] - 115V/60HZ
- [22] - US 751-01
- [23] - FOR IDENITF. LETTER C
- [24] - 19GALLON AS/PE2
- [25] - 100-120V, 751-11GB,110/50, 19GALL.
- [26] - 590-21, 791-21, 791-2M/B1EUGB,230V
- [27] - EU 751-61, 791-21
- [28] - GB 751-01
- [29] - US 751-11/21 761-21
- [30] - GB,230V
- [31] - 100V/1200W 751-71
- [32] - FOR IDENTIF. LETTER M
- [33] - EU 751-01
- [34] - 751-71  
STOCK COVERS GUARANTEE
- [35] - AU
- [36] - ZA 751-01
- [37] - GB,110V 751-11/21
- [38] - FOR IDENTIF. LETTER C
- [39] - CH 751-11/21 761-21
- [40] - GB,230V 751-11/21, 761-21
- [41] - 220-240V, 751-11 -21 19 GALL.
- [42] - FOR IDENTIF. LETTER C  
PLEASE CONTACT CARWASH DIRECTLY
- [43] - FOR 100-120V



# RECOMMENDED SPARE PARTS

ATTIX 751-11

2014.11.27

2015.06.29

---

- [44] - 120V/1000W 751-71
- [45] - 100-120V 761-21
- [46] - PRUNED - NO REPLACEMENT
- [47] - FOR IDENTIF.LETTERL+M
- [48] - 220-240V/1200W 751-71  
PLEASE CONTACT CARWASH DIRECTLY
- [49] - 220-240V, 550-21, 751-21, 751-11
- [50] - AU 751-01
- [51] - 751-71 19GALLON AE
- [52] - 100-120V, 12GALL.RDF 751-11 -21
- [53] - 19GALL.AE
- [54] - ZA
- [55] - CH 751-61
- [56] - 791-21, 791-2M/B1
- [57] - FOR IDENTIF. LETTER L
- [58] - 590-21, EC 12GALLON AS/E, 791-21
- [59] - 220-240V 751-61-71
- [60] - US 751-11/21
- [61] - 751-01, 751-11, 751-21, 19GALL., 791-21, 791-2M/B1
- [62] - 550-1, 12 GALLON, 751-01
- [63] - DK 751-11/21, 761-21

